



OmniLab Manual

January 2002 Edition

Support

For support, please contact:

Igor Kagan

Email: kigor@tx.technion.ac.il

Website: <http://igoresha.virtualave.net/LabVIEW/OmniLab>

Important Information

WARNING REGARDING MEDICAL AND CLINICAL USE

"National Instruments products are not designed with components and testing for a level of reliability suitable for use in treatment and diagnosis of humans or as critical components in any life support systems whose failure to perform can reasonably be expected to cause significant injury to a human. Applications of National Instruments products involving medical or clinical treatment can create a potential for death or bodily injury caused by product failure, or by errors on the part of the user or application designer. Any use or application of National Instruments products for or involving medical or clinical treatment must be performed by properly trained and qualified medical personnel, and all traditional medical safeguards, equipment, and procedures that are appropriate in the particular situation to prevent serious injury or death should always continue to be used when National Instruments products are being used. National Instruments products are NOT intended to be a substitute for any form of established process, procedure, or equipment used to monitor or safeguard human health and safety in medical or clinical treatment."

National Instruments (www.ni.com)

Since OmniLab is based on NI LabVIEW, the above statement equally applies to the OmniLab software.

License

OmniLab copyright (c) 1999-2002 Igor Kagan. All Rights Reserved.

LICENSE AGREEMENT

You should carefully read the following terms and conditions before using this software. Your use of this software indicates your acceptance of this license agreement and warranty.

One registered copy of OmniLab may be used by a single person/lab on one or two computers at any time, including portable or home computer.

Disclaimer of Warranty

THIS SOFTWARE AND THE ACCOMPANYING FILES ARE SOLD "AS IS" AND WITHOUT WARRANTIES AS TO PERFORMANCE OR MERCHANTABILITY OR ANY OTHER WARRANTIES WHETHER EXPRESSED OR IMPLIED.

IN NO EVENT SHALL IGOR KAGAN BE LIABLE FOR DAMAGE OF ANY KIND, LOSS OF DATA, LOSS OF PROFITS, BUSINESS INTERRUPTION OR OTHER PECUNIARY LOSS ARISING DIRECTLY OR INDIRECTLY. THIS DISCLAIMER OF WARRANTY CONSTITUTES AN ESSENTIAL PART OF THE AGREEMENT.

Igor Kagan

kigor@tx.technion.ac.il

<http://igoresha.virtualave.net>

Contents

Table of Contents

SUPPORT	2
IMPORTANT INFORMATION	3
LICENSE	4
CONTENTS	5
TABLE OF CONTENTS	5
FIGURES	9
ABOUT THIS MANUAL	10
ORGANIZATION OF THIS MANUAL	10
CONVENTIONS USED IN THIS MANUAL.....	12
CHAPTER 1. INTRODUCTION TO OMNILAB	14
WHAT IS OMNILAB?.....	14
OMNILAB FEATURES	14
FUTURE DEVELOPMENT PLANS.....	15
<i>Current To Do list</i>	15
CHAPTER 2. SETTING UP YOUR SYSTEM	16
MINIMUM SYSTEM REQUIREMENTS	16
INSTALLING YOUR NI-DAQ SOFTWARE	16
INSTALLING YOUR HARDWARE	17
INSTALLING LABVIEW	17
INSTALLING OMNILAB.....	17
<i>Installing from OmniLab CD</i>	17

<i>Installing from OmniLab floppy diskettes</i>	18
<i>Installing from OmniLab website</i>	18
UPGRADING TO LABVIEW 6.0.2 FROM 6.0.	18
<i>Installing upgrade from NI website:</i>	18
<i>Installing upgrade from OmniLab CD:</i>	19
STARTING OMNILAB.....	20
CHAPTER 3. ACQUIRING DATA: MONITORING AND RECORDING	21
CALIBRATION	21
<i>Create New Calibration</i>	21
<i>Update Old Calibration</i>	23
<i>Change Calibration in Datafile</i>	23
ACQUISITION SETUP	23
<i>Basic options</i>	24
<i>Advanced options</i>	25
ACQUIRE DATA MODE	26
<i>Monitoring (scope) mode</i>	26
<i>Recording mode</i>	26
CHAPTER 4. RETRIEVING DATA	27
CHAPTER 5. EXPORTING DATA.....	27
CHAPTER 6. PRINTING DATA.....	27
CHAPTER 7. HELP AND TROUBLESHOOTING	28
HELP.....	28
TROUBLESHOOTING	28
APPENDIX A. OMNILAB DATAFILE FORMAT	29
APPENDIX B. CHANGES	37
APPENDIX C. EXAMPLES.....	43
APPENDIX D. README FILE.....	44
KEY NAVIGATION - SHORTCUTS:	45

APPENDIX E. SAMPLE MATLAB M-FILES.....	46
READBIN.M	46
APPENDIX F. QUICK REFERENCE – GETTING STARTED INSTRUCTIONS.....	48
GENERAL INSTRUCTIONS:	48
<i>Saving default values:</i>	49
START.....	49
1 SETUP.....	49
1.1 <i>Calibration</i>	49
1.2 <i>Acquisition setup</i>	50
1.3 <i>Online processing setup</i>	51
2 ACQUIRE MODE (ONLINE MONITORING AND RECORDING).....	52
2.1 <i>Monitoring</i>	53
2.2 <i>Recording</i>	55
3 DISPLAY MODE (DATA RETRIEVAL AND EXPORT)	55
3.1 <i>Data retrieval</i>	56
3.2 <i>Data export</i>	57
4. ANALYSIS.....	58
4.1 <i>Analysis setup</i>	58
4.2 <i>Cursor graph</i>	58
4.3 <i>Heart rate estimation</i>	58
5 DISPLAY BIN/LOG	58
6 PRINTING.....	59
6.1 <i>Display and Acquisition modes</i>	59
6.2 <i>Display mode</i>	59
GLOSSARY	60
A.....	60
B.....	60
C.....	60
D.....	61
E.....	61
F.....	61
G.....	61
H.....	62

I.....	62
J.....	62
K.....	62
L.....	62
M.....	62
N.....	62
O.....	62
P.....	63
Q.....	63
R.....	63
S.....	63
T.....	63
U.....	63
V.....	63
W.....	64
X.....	64
Y.....	64
Z.....	64
OMNILAB DATASHEET	65

Figures

<i>Figure 1. OmniLab splash screen</i>	20
<i>Figure 2. OmniLab title bar and Run button</i>	20
<i>Figure 3. Main mode drop-down menu with Calibrate channels mode selected</i>	21
<i>Figure 4. Control part of CalibrateChannels view</i>	22
<i>Figure 5. Acquisition setup</i>	24

About This Manual

Use the *OmniLab Manual* to learn the features, functions, and operation of OmniLab. OmniLab is intended to acquire, display and analyze physiological data using a NI DAQ and personal computer. To use this manual and OmniLab software effectively, you should be familiar with the Windows OS. No programming knowledge is required.

Organization of This Manual

This manual is organized as follows:

- *Chapter 1, **Introduction to OmniLab***, introduces the OmniLab application.
- *Chapter 2, **Setting Up Your System***, explains how to set up your OmniLab system and start the OmniLab application.
- *Chapter 3, **Acquiring Data: Monitoring and Recording***, gives instructions for acquiring data with OmniLab after you have set up your system.
- *Chapter 4, **Retrieving Data***, explains the ways you can retrieve, display and analyze data in OmniLab.
- *Chapter 5, **Exporting Data***, explains how to export OmniLab data to other applications/formats.

- *Chapter 6, **Printing Data***, explains how OmniLab can print snapshots of your data as they appear on the screen, or print reports that summarize the data you acquire.
- *Chapter 7, **Help and Troubleshooting***, explains how to use the OmniLab online help features and also offers some troubleshooting tips.

- *Appendix A, [OmniLab Datafile Format](#)*.
- *Appendix B, [Changes](#)*, describes history of development changes.
- *Appendix C, [Examples](#)*, gives you step-by-step examples on how you can use OmniLab.
- *Appendix D, [ReadMe](#) file*.
- *Appendix E, [Sample Matlab m-files](#) for reading OmniLab exported datafiles*.
- *Appendix F, [Quick Reference](#) – Getting Started Instructions*.

- The *Glossary* contains an alphabetical list and description of terms used in this manual, including abbreviations and acronyms.

- The *OmniLab datasheet*.

Conventions Used in This Manual

The following conventions are used in this manual:

- ◊ Angle brackets enclose the name of a key on the keyboard (for example, <Shift>).
- A hyphen between two or more key names enclosed in angle brackets denotes that you should simultaneously press the named keys, for example, <Ctrl-Alt-Delete>.
- | The | symbol leads you through nested menu items and dialog box options to a final action. The sequence **Operate | Change to Edit Mode** directs you to pull down the Operate menu, and select the Change to Edit Mode item.
- bold** Bold text denotes the names of menus, menu items, buttons and other controls and indicators. Usually names are in inverted commas ("").
- bold italic*** Bold italic text denotes a note, caution, or warning.
- italic* Italic text denotes variables, emphasis, a cross reference, or an introduction to a key concept.
- `courier` Text in this font denotes text or characters that you should literally enter from the keyboard, sections of code, programming examples, and syntax examples. This font also is used for the proper names of disk drives, paths, directories, programs, subprograms, subroutines, device names, filenames, and extensions, and for statements and comments taken from programs.

courier bold Bold text in this font denotes the messages and responses that the computer automatically prints to the screen. This font also emphasizes lines of code that are different from the other examples.

courier italic Italic text in this font denotes that you must enter the appropriate words or values in the place of these items.

Chapter 1. Introduction to OmniLab

This chapter introduces the OmniLab software.

What Is OmniLab?

OmniLab is a versatile LabVIEW-based or stand-alone application designed to meet the data acquisition and data analysis needs of physiological labs by integrating personal computer with physiological monitoring system.

Using National Instruments data acquisition hardware, you can use OmniLab to acquire data from virtually any type of physiological, linear-voltage signal source. While your physiological data is being acquired, OmniLab can save it to disk along with your comments. After you save your data to disk, you can use OmniLab to open your data file for review, analysis and export.

OmniLab Features

Data Management – Keep track of the user name and the date and time each datafile was acquired. Automatically generate entries in a lab journal with time-stamped user comments list and other info.

Data Acquisition – Up to 16 analog input channels, output triggers for communication with other applications, variable sampling rate, switch between “monitoring” and “record” modes, log entire experiment to separate file with decimated sampling rate, streaming-to-disk capabilities, convenient calibration routine, separate calibration files, various display options, mark events in data with time-stamped comments.

Data Display and Analysis – Playback mode, navigate datafile and retrieve data blocks according to event user comments, various analysis options.

Data Export – Export data according to regions of interest, whole blocks or entire datafile to ASCII or binary file for further analysis in other software applications, sample Matlab software and source code available for reading and analysis of exported binary files. Various printing options and saving charts to different graphics file formats.

Future Development Plans

OmniLab is under continuous development and is constantly improving (well, I hope it is...). Most improvements are a direct result of customer feedback.

I welcome any suggestion for OmniLab development. If you have any ideas, requirements, or bug reports, please contact me by email at kigor@tx.technion.ac.il with subject "OmniLab". Thank you!

Current To Do list

1. Multiple profiles with options saved in INI file.
2. Automatic restart after 640 MB limit stop during data acquisition.
3. Automatic save to binary option during data acquisition.
4. Ability of partition to blocks (events, segments) during continuous acquisition (i.e. without going to monitoring (scope) mode).
5. Decimation of large segments (>10,000 points) of data before presenting them on the screen.

Please let me know what features you would like to see in future releases...

Chapter 2. Setting Up Your System

This chapter explains how to set up your OmniLab system and start the OmniLab application.

Minimum System Requirements

Your computer must have the following hardware and software to work with OmniLab:

- Microsoft Windows 95/98/NT/2000 (Windows 2000 is recommended).
- PC with Pentium (586) processor or higher.
- CD-ROM drive or floppy drive or Internet connection.
- VGA resolution (or higher) video adapter.
- Minimum of 32 MB of RAM (128 MB recommended).
- At least 25 MB free hard disk space.
- Microsoft-compatible mouse.
- NI-DAQ software and DAQ hardware (see below).
- LabVIEW 6.0.2 or LabVIEW 6.0.2 Run-Time Engine (see below).

Installing Your NI-DAQ Software

To install your NI-DAQ software, refer to the *NI-DAQ User Manual for PC Compatibles*. When you install NI-DAQ, use the Driver Files Installation option, which is the default setting.

Installing Your Hardware

To install and configure your hardware, refer to the user manual for your National Instruments data acquisition (DAQ) hardware.

Installing LabVIEW

If you use LabVIEW-based OmniLab version, you will need to install LabVIEW software. To install LabVIEW, refer to the your LabVIEW documentation package.

If you use stande-alone (built application) OmniLab version, LabVIEW 6.0.2 Run-Time Engine will be installed as part of OmniLab installation (see below).

Note: Users that have previous version of LabVIEW or LabVIEW Run-Time Engine should upgrade to 6.0.2 version (see below).

Installing OmniLab

To install OmniLab, complete the following steps:

1. Run OmniSetup:

Installing from OmniLab CD

Insert OmniLab CD to your CD-ROM drive. If *autorun* feature is enabled on your machine, the setup will start automatically. Otherwise, double click on `OmniSetup.exe` or select **Run** from the Windows **Start** menu and type `x:\OmniSetup` in the input box, where `x` is the letter of your CD drive.

Installing from OmniLab floppy diskettes

Insert OmniLab diskette 1 to your floppy drive. Double click on `OmniSetup.exe` or select **Run** from the Windows **Start** menu and type `x:\OmniSetup` in the input box, where `x` is the letter of your floppy drive.

Installing from OmniLab website

Download the `OmniSetup.exe` file to temporary directory (folder). Double click on `OmniSetup.exe` or select **Run** from the Windows **Start** menu and type `x\OmniSetup` in the input box, where `x` is the full path to the directory where the downloaded file is located (e.g. `x` can be `c:\Windows\temp`).

2. Follow the instructions that appear in the dialog boxes. It's highly recommended leaving default settings and options while installing OmniLab.

Upgrading to LabVIEW 6.0.2 from 6.0.

*Note: You should upgrade **BEFORE** you run OmniLab for the first time!*

To install upgrade patch, complete the following steps:

Installing upgrade from NI website:

1. Download the `setup.exe` file for your specific language version of LabVIEW from NI website (<http://www.ni.com>, search for "*LabVIEW 6.0.2 upgrade*").

2. If you have the LabVIEW Professional Development System or you have purchased the LabVIEW Application Builder separately, then you should also download the LabVIEW Run-Time Engine 6.0.2 installer (`lvrt.msi`) for your specific language version of

LabVIEW, and copy it to the <LabVIEW 6>\applibs\installs directory, where you must replace the file with the same name that already exists in that location.

3. Make sure LabVIEW is not running.
4. Run `setup.exe` by double-clicking on the file or select **Run** from the Windows **Start** menu and type `x\setup` in the input box, where `x` is the full path to the directory where the downloaded file is located (e.g. `x` can be `c:\Windows\temp`).

Note: Choose Mass Compile option when prompted.

5. Now you can start OmniLab.

Installing upgrade from OmniLab CD:

1. Make sure LabVIEW is not running.
2. Run the `setup.exe` from 6.0.2 directory by double-clicking on the file `x:\6.0.2\setup.exe` or select **Run** from the Windows **Start** menu and type `x:\6.0.2\setup` in the input box, where `x` is the letter of your CD drive.

Note: Choose Mass Compile option when prompted.

3. If you have the LabVIEW Professional Development System or you have purchased the LabVIEW Application Builder separately, then you should also copy the LabVIEW Run-Time Engine 6.0.2 installer (`lvrt.msi`) to the <LabVIEW 6>\applibs\installs directory, where you must replace the file with the same name that already exists in that location.

4. Now you can start OmniLab.

Starting OmniLab

To start OmniLab, select **Start | Programs | OmniLabvx | OmniLab vx**, where x is OmniLab version (e.g. x is 4.0) or double-click OmniLab vx shortcut on your desktop:



You should see the following start-up splash screen:



Figure 1. OmniLab splash screen

When splash screen disappears, you should see the main OmniLab window in the Acquire mode (see below). If window title bar looks like the sample bar below – the name is **without** star (*) – and the *Run* (arrow) button look like the sample button below (the arrow is **not** broken), chances are good that the installation succeeded.

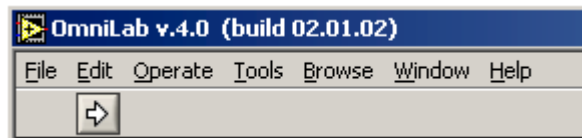


Figure 2. OmniLab title bar and Run button

Chapter 3. Acquiring Data: Monitoring and Recording

This chapter gives instructions for acquiring data with OmniLab after you have set up your system.

Calibration

The first thing you probably want to do before you start your experiment is to calibrate your system. OmniLab has built-in calibration procedure that allows you to calibrate each channel separately, save calibration for future or immediate use, update old calibration and change calibration in a datafile.

The linear 2-point calibration procedure is very simple and consists of defining two points in XY coordinate plane, where X is the measured voltage (acquired, or read value) and Y is a real-world value, measured by some independent calibrated device. The calibration equation is, thus, $Y=AX+B$, where A is the gain and B is the offset.

Create New Calibration

Start OmniLab, select *Calibrate channels* from **main drop-down menu** and press **Run** button (the arrow):

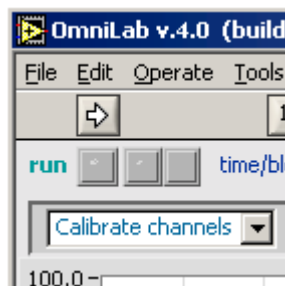


Figure 3. Main mode drop-down menu with Calibrate channels mode selected

The *CalibrateChannels* window (view) will appear. The control part of the view is shown below. Select channel to calibrate in the "**Channel**" menu. Press "**Acquire**" for the 1st point while supplying the appropriate known signal. Type known real-world value for the 1st point (e.g. 0 [mmHg]) and press button "**1**". Press "**Acquire**" for the 2nd point while supplying the appropriate known signal. Type known real-world value for the 2nd point (e.g. 100 [mmHg]) and press button "**2**". You may notice that the table above is being updated with these data, on each press of the "**1**" or "**2**" button. Of course, you can come back and correct the entries, if something went wrong. Moreover, you can enter data to the table manually, if for some reason you have a need to do so.

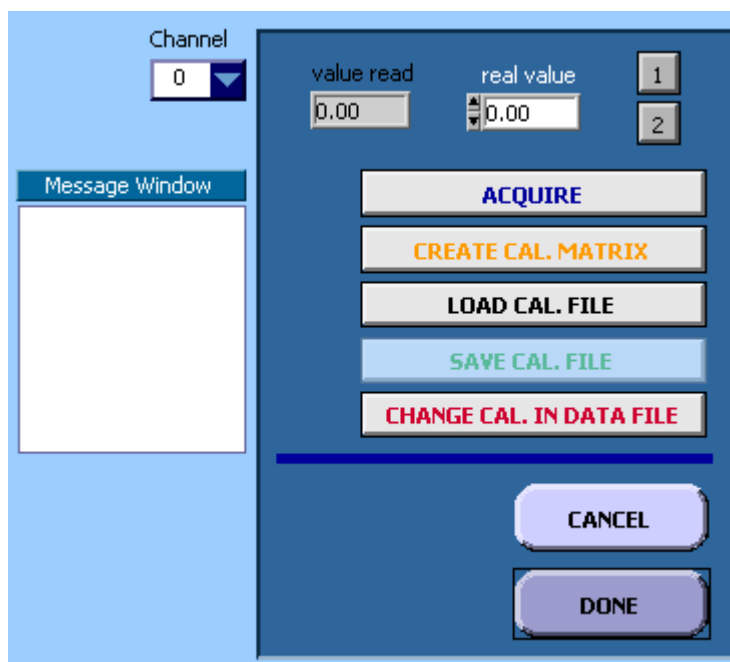


Figure 4. Control part of *CalibrateChannels* view

Repeat this procedure for each channel that you want to calibrate. Then press "**Create Cal. Matrix**" and new calibration table will be created. Now you can "**Save Cal. File**". Press "**Done**" when you are done. Now your calibration is saved in the cal file, and

in the memory. Last thing means that if you will start new datafile, the created calibration will be used in this datafile. The calibration will remain in the memory until you overwrite it with new calibration, or *exit* OmniLab.

Note: if you press "Cancel" instead of "Done", the cal file still will be created, but no calibration will reside in the memory!

Update Old Calibration

In the *CalibrateChannels* view press "**Load Cal. File**" and repeat steps described in the previous section for each channel that you want to update/fix. Remember to press "**Create Cal. Matrix**" before you save calibration to the file. You can save it as new cal file, or replace the existing one (the one that you just loaded in).

Change Calibration in Datafile

When you open a new datafile, the calibration that is currently in the memory (after you created it in *Calibrate channels* or loaded it from *Acquisition setup*, see later) will be written to the header of this datafile. However, you can change the calibration in the existing datafile by pressing "**Change Cal. in Data File**" and choosing the datafile you want to make changes to.

Acquisition setup

Before you start acquiring data, you have to perform *Acquisition setup*. You need to do it each time you start/restart OmniLab and are going to monitor/record new data. You will not be able to proceed to *Acquire* mode without having valid *Acquisition Setup*. The system will display warning "**No channels selected! Please go to Acquisition setup.**" and stop.

When you call *Acquisition Setup* mode, the following view appears:

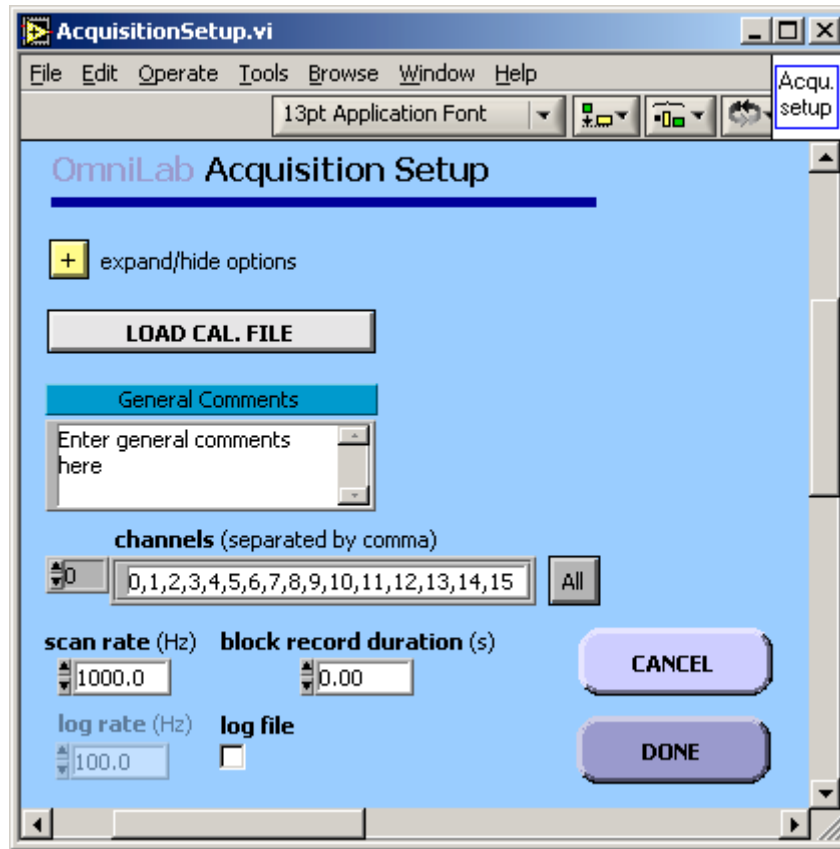


Figure 5. Acquisition setup

Basic options

The items required for valid setup are "**channels**" and "**scan rate**" (sample rate) (Hz). Button "**All**" selects all channels. Channels should be listed in ascending order and separated by commas.

Optional parameters:

Load calibration: press "**Load Cal. File**" and choose previously created *.cal file. You typically will perform this step if you want to use old (previously created and saved) calibration. When you load calibration, the message confirming this action will appear, for example:

"Calibration file loaded: C:\Igor\OmniLab\cal151100.cal".

Enter general comments (up to 1900 characters). You may also enter general comments later via *Info* dialog (see Chapter 4, [Retrieving Data](#)).

Set "**block record duration**" (in seconds) to record blocks of a predefined duration and automatically stop an acquisition after the specified time elapses. Leave it 0 if you want manual stop of recording.

Set "**log file**" on/off: choose on for this option if you want to log (save) the entire experiment (i.e. also when in *Scope*, and not only in *Record* mode) (default is off).

Set "**log rate**": sampling rate of the log file (default 100 Hz).

Advanced options

Press [+] in "**expand/hide options**" to set advanced options. Be absolutely sure you understand these setting before changing them.

The "**buffer size**" (in scans, or samples) - set the buffer size for buffered acquisition. In slow systems with little RAM, (e.g. <500 MHz CPU, 32 MB), to optimize performance, write 0.5 to 1 seconds worth of data to the file, therefore set "**scans2read**" (see *Acquire data* mode below) to scan rate or scan rate/2. Then set buffer size to at least 1.5 times "**scans2read**". In fast systems with lots of memory, you can leave the buffer size big enough but use much smaller "**scans2read**" values, to achieve smooth update of fresh data on the chart (see *Acquire data* mode below).

The "**device**" is the number of DAQ board (usually 1).

Acquire data mode

Monitoring (scope) mode

Recording mode

Chapter 4. Retrieving Data

...

Chapter 5. Exporting Data

...

Chapter 6. Printing Data

...

Chapter 7. Help and Troubleshooting

This chapter explains how to use OmniLab Help options and gives some troubleshooting tips.

Help

Press <Ctrl-H> to bring up the *Help Window* for individual items (controls and indicators). You can also call this window by **Help | Show Context Help**.

Place cursor over OmniLab icon (upper left corner) to see some essential information about this software.

Use **Help | Help For This VI** to open Compiled HTML Help for OmniLab.

Troubleshooting

This section contains some hints to help you with most frequent questions arising while using OmniLab.

Changes to chart options do not produce any visible effect

If you are in Acquire or Display mode, press **change F5** or **F5** button.

If you are in Display mode, press **SHOW BLOCKS F4** or **F4** button to re-load data to the chart.

Cannot see the data in a chart during Display mode

Be sure that you have clicked on the **SHOW BLOCKS F4** or **F4** button.

Click on the **Y auto** (scale) checkbox besides the chart on the left.

Appendix A. OmniLab Datafile Format

UPDATED 08.05.01

This file contains description of datafile formats created by OmniLab software.

OmniLab version 3 and higher
for MS-Windows 95/98/NT/2000
written by Igor Kagan

Copyright (c) 1999-2002 Igor Kagan.
All Rights Reserved.

kigor@tx.technion.ac.il

Dept. of Biomedical Eng.
Technion - IIT
Haifa 32000
Israel

FILES CREATED BY OMNILAB:

- I. DataFile
- II. Log File.
- III. Cal File.
- IV. Exported Binary File.
- V. Exported ASCII File.

FORMAT DESCRIPTION

I.

=====
OmniLab DataFile Format
=====

LEGEND:

char - 1 byte
integer - 2 bytes
long integer - 4 bytes
single precision float - 4 bytes

DATA FILE STRUCTURE:

The data are stored in binary files, using a following format:

|Total Header|->|DATA|:
|UserHeader->BlockComments->Binary (LabVIEW) header|->|DATA|

1. User Header

Total Header length..... 4 bytes long integer (0-3)
User General Header length..... 4 bytes long integer (4-7)
Number of scans..... 4 bytes long integer (8-11)
Number of channels..... 2 bytes integer (12-13)
Channels..... 32 bytes array of two bytes integers
(14-45)
Scan rate (frequency [Hz])..... 4 bytes single float (46-49)
Date and Time..... 50 bytes chars (50-99)
Version..... 40 bytes chars (100-139)

Calibration Coefficients a&b..... 16 x (4+4) = 128 bytes array of 4 bytes single floats (140-267)

General Comments..... 1900 bytes chars (268-2167)

2168 - User Header length

Parameters 100 bytes (2168-2267)

On-line Parameters (5)

(34 bytes:)

name..... 10 bytes

species..... 10 bytes

gender..... 6 bytes

weight..... 4 bytes single float

heart weight..... 4 bytes single float

(+ 16 bytes reserved)

Off-line Parameters (10):

(50 bytes: 10x4 + 10 (reserved))

...

2268 - User General Header length

2. Block Headers

Block Headers Header:

Current Data End (File Length).... 4 bytes long integer (2268-2271)

Block Headers length..... 4 bytes long integer (2272-2275)

Number of Blocks..... 4 bytes long integer [1000 max] (2276-2279)

Block Comment Max length..... 4 bytes long integer (44) (2280-2283)

wwwww..... 5 bytes chars (2284-2288)

for each block:

Block Comment start..... 4 bytes long integer (first 2289-...)
Block Comment length..... 4 bytes long integer
Block Comment..... of Block Comments length chars [max 44
(4 for number + one space + 30 user) + one space + time (8 chars
::*)]
Block Data start..... 4 bytes long integer
Block Data length..... 4 bytes long integer
wwwww..... 5 bytes chars (...)

(There may be empty blocks...)

Maximal number of blocks: 1000

Taken by max $1000 \cdot (21+44=65)$ 65000 bytes (2289-67289)

Length of User Header is 67289

3. Binary (LabVIEW) Header

Binary Header Length..... 4 bytes long integer
Group channels settings..... \$ bytes binary string ()

Group channel settings are written by internal LabVIEW procedures
according
to the following format:

number of channels..... long integer 4 bytes
for each channel:
length of channel name..... long integer 4 bytes
channel name "length of channel name" chars
single float 4 bytes -...
single float 4 bytes -...
single float 4 bytes -...
polarity..... integer 2 bytes
(if 2 - monopolar, then binary data - unsigned integers, if 1 - bipolar,
then binary data - signed integers)

single float 4 bytes -...
short integer 2 bytes-...
short integer 2 bytes-...
scale multiplier..... single float 4 bytes
scale offset..... single float 4 bytes
(only polarity, scale multiplier and scale offset parameters are required
to reconstruct data waveforms)

wwwww..... 5 bytes chars

4. Data

2D array:

 each column - one channel
 each row - one scan

```
.....  
| sc0 ch0 | sc0 ch1 | sc0 ch2 |  
.....  
| sc1 ch0 | sc1 ch1 | sc1 ch2 |  
.....
```

Byte stream written to file contains data in the following manner:

[Header scan 0 (channels ...) scan 1 (channels...)]

3. LabVIEW stores numeric data in Big Endian Form (most significant byte first). Other applications typically expect numeric data to be in little endian form (least-significant byte first). In this case files should be transformed to Little Endian Form before using in these applications.

Examples of BIG ENDIAN and LITTLE ENDIAN formats:

2 bytes integer (1):

LabVIEW (hex form): 00 01

Matlab (hex form): 01 00

4 bytes single float (2.5)

LabVIEW (hex form): 40 20 00 00

Matlab (hex form): 00 00 20 40

II.

=====

OmniLab Log File Format

=====

Same as Exported Binary File.

III.

=====

OmniLab Cal File Format

=====

Calibration (Y=AX+B) ASCII (TXT) file.

[Number of channels rows (16)] x [6 columns], delimited by TAB:

Columns (1-6):

A B read1(X(1)) real1(Y(1)) read2(X(2)) real2(Y(2))

IV.

=====

OmniLab Exported Binary File Format

=====

(see also readbin.m)

LEGEND:

```
%-----  
% long integer          - 4 bytes  
% single precision float - 4 bytes  
%-----
```

% Files have following simple structure:

% Header:

```
% number of channels (long integer)  
% number of scans (long integer)  
% scan rate (Hz) (single precision float)  
% start time (8 chars)  
% comment length (long integer)  
% comments ('comment length' chars)
```

% Data (single precision floats)

% NOTE:

```
% Labview stores numeric data in Big Endian Form (most significant  
% byte first). Other applications typically expect numeric data to be  
% in little endian form (least-significant byte first). In this case  
% files should be transformed to Little Endian Form before using by  
% these applications. In Matlab 5.x there is a parameter in FOPEN  
function -  
% MACHINEFORMAT - that should be used for these files:  
% 'ieee-be' or 'b' - IEEE floating point with big-endian byte ordering.  
% See 'help fopen' for more details on how to read big- and little-endian  
files.
```

```
%-----
```

V.

```
=====
OmniLab ASCII File Format
=====
```

[Number of scans] x [Number of channels], delimited by TAB:

Each row - one scan (sample)

Each column - one channel

Appendix B. Changes

=====

OmniLab

History of Development Changes

(Latest revisions go first)

=====

Latest version: 4.0

02.01.02

Record button RED when recording.

Logfile button moved.

XScale precision added (when t(ime).scale <= 1 second, two digits precision.

Acquisition Setup revised.

Analysis Setup added.

Smoothing option added to analysis.

Cosmetic changes.

Change Chart steps reordered, now autoscale Y updates correctly after moving channels between plots.

27.11.01

Major changes in graphics and UI: one chart instead of many, up to 8 plots (panels),

channel color selection.

LabVIEW bug? - Crash when go to Full Mode with #plots > 1 and data in chart.

PrintChart (F8) revised, HTML (PNG) printing added, Y axis label printing option added.

SaveChart (to BMP) added.

CursorGraph added.

Grid color added.

OmniLab 4.0

21.11.01

Bug discovered: gaps between successive portions of samples
(presentation only, datafiles are OK).

Cosmetic changes.

17.11.01

PrintChart changed, Cancel button added.

Pop-up windows changed to Modal.

In all pop-up windows Cancel assigned to Escape and Done (OK) to Return
(Enter).

Cosmetic changes.

Maxvel control (maximal velocity of playback) added to Display mode.

25.10.01

Digital line output added (on StartRecord, to trigger another computer).

OmniLab 3.1

25.06.01

Autoscale Y workaround added.

14.06.01

Converted to LabVIEW 6i.

Bugs in 6.0 discovered, got rid of by patching to 6.0.2 and mass-
recompiling.

OmniLab 3

10.06.01

Cal. file path added to Acquisition Info.

20.05.01

Online processing revised.

NaNs bug in save less than 16 channels to bin/ascii fixed.

08.05.01

New/old format support added to Display mode.

Stop in DisplayBinLog revised.

Save Info revised.

No channels warning added to Acquire mode.

Check number of blocks revised.

01.05.01

Help Link added.

Online Processing added (dp/dt, heart rate).

Timer added.

25.04.01

Disable stop when recording.

Print button color changed.

Save blocks (no split) revised.

22.04.01

Freeze added to Display mode.

Print Front Panel added to Acquisition mode.

Print chart revised.

Full graph mode added to Display mode.

Grid on/off added.

Acquisition Info placement revised.

Limit data file to 640 MB added (stopping when exceeded).

Check number of blocks added (not recording if exceeded lim (1000),
warning about last).

* NEW FORMAT *

User block comments length increased to 30 symbols.

21.04.01

Print Front Panel added.

Display mode revised (smart read added, time scale and time to read separated).

11.04.01

Disable STOP when playing added.

REWIND added.

Log START added.

Acquisition Info revised.

File Info revised.

Display mode revised.

Print chart added.

OmniLab 2.1

15.01.01

4-plot chart added to Display mode. Graph version is still available in 1.0.c.

Cosmetic changes.

Fixed FreeDiskSpace Checking.

Fixed Comment length (from 32 to 31, User's 17)

OmniLab 2.0

14.01.01

Formats of bin (SaveBinary and SaveBlocks) and log files have been matched.

Full Screen added to Acquisition mode.

X and Y grid fixed in Acquisition mode.

Decimated log file (100 Hz) added to Acquisition mode.

02.01.01

Comment length and Comment fields added to binary file header in "Save Blocks".

"Wait" added to main loop in Display mode.

"Close" (x) button disabled while running.

"Split blocks" (save each block to separate file in batch mode) added to Display Mode.

"Append to empty file" bug fixed.

27.12.00

Time format changed to 24 hours.

F1 and F2 keys exchanged.

20.12.00

Warning about insufficient disk space added to startup of Acquisition mode.

Check of free disk space added while recording data - stop recording if less than 100 Mb remained.

Scroll max initialization to one added to Display Mode.

18.12.00

Time Stamp in Block Comment changed to format hh:mm:ss.

Block comment max length decreased to 22 symbols (18 user-supplied + number (4 chars) + space).

StartTime added to binary file header in "Save Blocks"

05.12.00

Error "No acquisition setup" added to Acquisition mode.

Added "Save Blocks" functionality to Display mode.

Added "All" (select all blocks) button to Display mode.

30.11.00

Added Block Comments History to Info in Acquisition mode.

Abort Button and Run Continuous Button removed.

26.11.00

Added "Start Path" functionality to Display mode.

Cosmetic changes.

Warning about "No Calibration" added to Acquisition mode.

OmniLab v.1.1.0.c

Early development changes, not documented.

OmniLab v.1.1.0.b - first version.

...

Appendix C. Examples

This section will be available in the next edition of the Manual, not documented yet...

Appendix D. ReadMe File

OmniLab README

Updated: 02.01.02

This folder contains source code for OmniLab software,
written in Labview 5.1.1 G Programming Language and
converted to 6.0.2 version

OmniLab version 4.0
for MS-Windows 95/98/NT/2000
written by Igor Kagan
<http://igoresha.virtualave.net/LabVIEW/OmniLab.html>

Copyright (c) 1999-2002 Igor Kagan. All Rights Reserved.
See License.txt for more information.

kigor@tx.technion.ac.il
Dept. of Biomedical Eng.
Technion - IIT
Haifa 32000
Israel

See also:

- OmniLab Help (file OmniLabHelp.chm)
- Format.txt
- Calibration.txt
- Changes.txt
- Acquisition.txt
- Instructions.txt
- readbin.m
- readlvf.m

and OmniLab Manual

Key Navigation – keyboard shortcuts:

Main window

Escape - toggle between full/normal chart(graph) screen

F1 - stop

F2 - start record

F3 - select block comment field

F4 - show selected blocks

F5 - change chart options

F6 - freeze chart

F7 - info

F8 - print chart

Ctrl-F8 - print front panel

Pop-up windows

Escape - cancel (close window and return to main window)

Enter - Done/OK

Appendix E. Sample Matlab m-files

readbin.m

```
%%%%%%%%%%%%%%%%%%%%%%%%%%%%%%%%%%%%%%%%%%%%%%%%%%%%%%%%%%%%%%%%%%%%%%%%
% Example code for reading binary files created by      %
% LabVIEW OmniLab software                             %
% Can be used to read log (decimated) files as well   %
% Copyright (c) 1999-2001 Igor Kagan                  %
%%%%%%%%%%%%%%%%%%%%%%%%%%%%%%%%%%%%%%%%%%%%%%%%%%%%%%%%%%%%%%%%%%%%%%%%

%-----
% long integer          - 4 bytes
% single precision float - 4 bytes
%-----

% Files have following simple structure:

% Header:
% number of channels (long integer)
% number of scans (long integer)
% scan rate (Hz) (single precision float)
% start time (8 chars)
% comment length (long integer)
% comments ('comment length' chars)

% Data (single precision floats)

% NOTE:
% Labview stores numeric data in Big Endian Form (most significant
% byte first). Other applications typically expect numeric data to be
% in little endian form (least-significant byte first). In this case
```

```

% files should be transformed to Little Endian Form before using by
% these applications. In Matlab 5.x there is a parameter in FOPEN
% function - MACHINEFORMAT - that should be used for these files:
% 'ieee-be' or 'b' - IEEE floating point with big-endian byte ordering.
% See 'help fopen' for more details on how to read big- and little-endian
% files.
%-----

% <- BEGIN CODE ->

% fid = fopen('test151100a_b_1_1.bin','r+','ieee-be');
[filename, pathname] = uigetfile('*.bin;*.log', ['Please, choose bin/log
file'], .4, .4);
if filename == 0, return; end;
FullName = [pathname,filename];
fid=fopen(FullName,'r+','ieee-be');
cd(pathname);

% READ BINARY HEADER
NumberOfChannels = fread(fid,1,'long');
NumberOfScans    = fread(fid,1,'long');
ScanRate         = fread(fid,1,'float32');
StartTime        = char(fread(fid,8,'char'))';
CommentLength    = fread(fid,1,'long');
Comments         = char(fread(fid,CommentLength,'char'))';

% READ DATA
data             = (fread(fid,[NumberOfChannels,NumberOfScans],'float32'))';
%plot(data)
fclose(fid);

% <- END CODE ->

```

Appendix F. Quick Reference – Getting Started Instructions

=====
OmniLab version 4

INSTRUCTIONS

Last updated 02.01.02
=====

see also:

OmniLabHelp (Help | Help for this VI)

and online help (press Ctrl-H and position cursor over the individual item (control/indicator) of interest)

GENERAL INSTRUCTIONS:

Press "Stop" (F1) before you change the mode in the main drop-down menu (under the Run button on the upper left). The only exception for this rule is menu item "Analysis Setup", that can be called during Display mode without stopping.

When you change something in chart display option and do not see the result, press "change F5" or F5.

In some cases in Display mode, you may need to press "SHOW BLOCKS F4" or F4 to evoke the change.

"Stop" may not react immediately in some situations, keep it pressed for a couple of seconds or better use the F1 key.

When program is running, the arrow is black and left LED below is green.

Saving default values:

For an individual item

1. "Operate | Change to Edit Mode"
2. Enter password.
2. Right click on item, select "Data Operations | Make Current Value Default"
3. "File | Save"

For all items on the Front Panel

(Note: use with caution, make sure all items on the Front Panel have been set to desired default values!)

1. "Operate | Change to Edit Mode"
2. Enter password.
2. "Operate | Make Current Values Default"
3. "File | Save"

START

Double-click on OmniLab shortcut on your desktop

1 Setup

1.1 Calibration

1.1.1 New calibration

Select "Calibrate channels" in the main menu.

Press "Run".

In Calibrate Channels:

(*) Select channel.

Press "Acquire" for the 1st point (lower lim) while supplying the appropriate known signal.

Type real-world value for the 1st point (e.g. 0 mmHg) and press button "1".

Press "Acquire" for the 2nd point (upper lim) while supplying the appropriate known signal.

Type real-world value for the 2nd point (e.g. 100 mmHg) and press button "2".

Repeat for each channel that you want to calibrate.

Press "Create Cal. Matrix".

Press "Save Cal. File".

Press "Done".

1.1.2 To append/change previously saved calibration:

Select "Calibrate channels".

Press "Run".

Press "Load Cal. File", choose previously created *.cal file and use procedure 1.1.1 starting from the step (*) Select Channel, for each channel that you want to update.

Note: if you performed "Calibrate Channels" step before starting the Acquisition and did not exit OmniLab, the created calibration is valid and will be applied to the datafile automatically. In this case, you do not need to perform the "Load Cal. File" step in Acquisition setup (see below).

1.2 Acquisition setup

Select "Acquisition setup" in the main menu.

Press "Run".

1.2.1 Basic options

Choose channels (separated by comma, 0-15, e.g. 1,2).

Choose scan (sampling) rate (default 1000 or 200 Hz).

Optional:

Load calibration: press "Load Cal. File" and choose previously created *.cal file.

You typically will perform this step if you want to use old calibration.

Choose scan (sampling) rate in Hz per each channel (default 200 or 1000).

Enter general comments (up to 1900 characters). You may also enter general comments later.

Select "block record duration" (s) to record blocks of a predefined duration or leave it 0 if you do not want automatic "stop record".

Log file on/off: choose on for this option if you want to log (save) the entire experiment (i.e. also when in "Scope", and not only in "Record" mode) (default off).

Log rate: sampling rate of log file (default 100 Hz).

1.2.2 Advanced options

Press [+] in "expand/hide options" to set advanced options.

Buffer size (scans/samples) - set the buffer size for buffered acquisition.

1.3 Online processing setup

(see also OnlineProcessing.txt)

Select "Online processing" from the main menu.

Press "Run".

1.3.1 Pressure

Select: pressure channel, low-pass cutoff for low-pass filter, and filter order (default -1 (none), 25 Hz and 10).

Pressure channel will be used for dP/dt , which will be displayed as channel 15 (last channel in chart legend).

If no dP/dt is needed, select "-1" for pressure channel.

1.3.2 Heart rate

Select: ECG channel, and analysis mode (default -1 (none) and via spectrum).

The selected ECG channel will be used for heart rate estimation.

If no heart rate is needed, select "-1" for ECG channel.

Note: This part will be revised in the next release.

2 Acquire mode (online monitoring and recording)

*** Create new folder in C:\Data (e.g. test200501) using, for example, Windows Explorer: (Click Explorer shortcut, double-click: My Computer, Local Disk (C:), Data, then press File | New | Folder, type folder name and press "Enter").

Select "Acquire data" in the main menu.

Press "Run".

Select file name (default "experiment name + date", e.g. test200501.dat) and save it to the created folder:

(In dialog "Save as" double-click folder Data, then created folder, and press "Save")

Date format: ddmmyy - day, month, year.

Notes:

- 1) If no calibration has been applied, warning "No calibration applied!" will appear. Press "Continue" if you want to continue working without calibration or "Stop" if you do want to apply calibration.
- 2) "Acquire data" mode will run only after you performed valid "Acquisition setup".

If you want to append new data to the existing datafile, select "Do not change file" option.

If you do not have any datafile open (that is, you are just starting working), you can select datafile from the disk and append new data to it.

If you already have open datafile, new data will be appended to it without asking you any more questions (this is useful when you, for example, stopped the acquisition, went to Display mode to review the file, and now want to continue recording new blocks to the same file).

Note: you can append only if you have same number of channels and sampling (scan) rate as in the file.

If you use "Change file" option but select the already existing datafile, you will be prompted to replace (overwrite) the existing file, or cancel.

2.1 Monitoring

(right LED is dark-green)

2.1.1 Changing number of plots/panels:

for versions before 4.x

Channels arrangement:

"#chart" (1,2, or 4 panels)

Any channel can be put on any panel/plot

- right click on channel number and select "Y scale"

for versions 4.x and higher

1. Operate | Change to Edit Mode
2. Enter password
3. Right click on chart area | Overlay Plots
4. Change "#plots" to desired value
5. Run (in Acquire or Display mode) for an instant, then stop

6. Operate | Change to Edit Mode
7. Right click on chart area | Stack Plots

Note: this complicated procedure hopefully will no longer be necessary if NI will fix their bug

Channel settings:

Any channel can be put on any panel/plot

- select appropriate "plot" next to the channel LED.

Change color for each channel

- select appropriate "color" next to the channel LED.

Show sel. - show selected channels ("show" LED is on)

Show all - ...

Hide all - ...

2.1.2 Chart options:

t.scale (s) - time scale (default 10)

xgrid (s) - time scale division (default 0.5)

grid - on/of (default on), grid color (default light grey)

ysplit - arbitrary vertical offset between channels (default 0)

disp cal - display calibration on/off (default on)

all y auto - all plots/panels autoscale on/off.

below are y autoscale on/off individual controls, according to number of plots/panels ("#plots")

F5 - change chart options (press after entering new settings)

Esc - toggles between full-screen/normal chart

2.1.3 Additional options:

F6 - freeze chart

F7 - file info

Timer on/off (seconds elapsed from the moment when turned on)

2.1.4 Advanced options:

scans2read - controls the "smoothness" and speed of chart update. If the number is small, smaller portions of data are added to chart on each iteration more frequently, and vice versa. When you change it, keep track of "b.log" (backlog) indicator - if it is increasing, increase "scans2read".

Note that if "b.log" exceeds "buffer size" (set in Acquisition setup, see "Advanced options"), the acquisition will be corrupted and current datafile lost.

2.2 Recording

(middle LED is red)

Press "START RECORD" (F2) to start recording.

Click in "Block comments" frame or press F3 to start enter block comments.

The "time/block" indicator will show recording time (in seconds).

The "time rec." shows the duration of previously acquired blocks (in seconds).

Press "STOP RECORD" (F2) to stop recording.

3 Display mode (data retrieval and export)

Select "Display data" in the main menu.

Press "Run"

Select file

(change to "Do not change file" if you are going to continue working with the same file)

3.1 Data retrieval

Select block or number of successive blocks to read in "Block Comments".

"select all" will select all blocks in file.

Press "SHOW BLOCKS F4" or F4 to read and show selected block(s).

scroll: sets the offset from the beginning of data block(s) selected (seconds).

dur: shows the duration of data block(s) selected (seconds).

3.1.1 Chart options:

t2read - time that is shown/read from the file (see also "Play")

t.scale (s) - time scale (default 10 seconds)

xgrid (s) - time scale division (default 0.5 seconds)

grid - on/of (default on), grid color (default light grey)

y split - arbitrary vertical offset between channels (default 0)

x autoscale - when on, t.scale will be equal to t2read

all y auto - all plots/panels autoscale on/off.

below are y autoscale on/off individual controls, according to number of plots/panels ("#plots")

"change F5" or F5 - change chart options (press after entering new settings)

Channel settings:

Any channel can be put on any panel/plot

- select appropriate "plot" next to the channel LED.

Change color for each channel

- select appropriate "color" next to the channel LED.

Show sel. - show selected channels ("show" LED is on)

Show all - ...

Hide all - ...

You have to press "SHOW BLOCKS F4" or F4 to bring new channel settings to effect.

3.1.2 Additional options:

F6 - freeze chart

F7 - file info/save file info in text file

F8 - Print with comments

save chart - save chart to graphic (BMP) format

3.1.3 Navigate along the file:

Select required block(s) (according to user comments and time) and press "SHOW BLOCKS F4" or F4.

3.1.4 Move along selected block(s):

Manual - change scroll, t2read and t.scale.

Auto - use "Play/Stop" and "Rewind/Stop" buttons (during Rewind the autoscale will be on).

The velocity of Play/Rewind is set by "t2read" and "maxvel" controls. See Help on "maxvel" for more info.

3.2 Data export

Buttons "Save ASCII"/"Save bin" - export the data that is currently displayed on the chart.

"Save Blocks" will export selected block(s) to binary format.

Press "split blocks" if you want to export each block to a different (separate) file.

4. Analysis

4.1 Analysis setup

Select "Analysis setup" in the main menu.

Press "Run".

Note: Currently only smoothing filter is available.

Select channel from "Channels" menu and set "Smoothing" and "Sigma".

"Sigma" (in seconds) is the parameter of Gaussian bell that will be convoluted with the channel signal to smooth it.

The more is the "Sigma", the wider is the Gaussian bell the smoother is the signal.

Note: the Analysis setup option works also during the Display mode - you do not have to stop and call "Analysis setup" each time you have to change Analysis settings. However, you have to press "SHOW BLOCKS F4" or F4 to bring new analysis settings to effect.

4.2 Cursor graph

Will be modified and documented later.

4.3 Heart rate estimation

Will be modified and documented later.

5 Display bin/log

Will be modified and documented later.

6 Printing

6.1 Display and Acquisition modes

Ctrl-F8 or File | Print Window (Ctrl-P)

- print visible Window (Use Esc to put chart in Full Screen mode)

6.2 Display mode

Print F8 - use to print chart only (there are options to add Notes, Axes labels, save to HTML and PNG, etc.)

Custom Print Settings: Edit | Preferences | Printing

Glossary

A

- acquisition (of data) Recording data to computer memory for display and/or to file for storage.
- acquire mode Data acquisition mode, includes *Record* and *Monitoring (Scope)* mode.

B

- block (of data) Continuous data segment recorded to file and marked by time stamp and user comment. Also called *event*.

C

- calibration Procedure that links voltage data with real world (physical) value. Performed for each channel (sensor) separately.
- cal file Calibration file.
- channel A pathway between data acquisition hardware and computer. Each sensor/transducer output (DAC input signal) is connected to one channel. Channels are labeled ACH0, ACH1, and so on, on your terminal connectors (such as the BNC-2090 and BNC-2091), and 0, 1, ... 15 in OmniLab interface.
- chart The chart that displays the data. Consist of one or more *panels (plots)*.
- control An item on OmniLab *front panel* (user interface) that can be changed by user (e.g. button).

D

DAQ	Data acquisition.
DAQ hardware	The equipment that takes the data from physiological monitoring devices (sensors) and transfers the data into your computer.
datafile	File, recorded to disk during the Record mode, contains one or more data <i>blocks</i> .
decimation	Process of reducing a large set of data values to a smaller, more manageable size. During <i>data acquisition</i> , decimation can be achieved by re-sampling the data with lower <i>sampling rate</i> . OmniLab uses this technique when the user requests to log the entire experiment to decimated <i>log file</i> .
device	The instrument that measures and collects the data, DAQ board.
display mode	Data retrieval, analysis and export mode. Works with previously acquired datafiles.

E

event	Continuous data segment recorded to file and marked by time stamp and user comment. Also called <i>block</i> .
-------	--

F

front panel	A part of <i>VI</i> visible to the user, graphic user interface (<i>GUI</i>).
-------------	---

G

CUI	Graphic user interface.
-----	-------------------------

H

Hz Hertz (samples, or scans per second).

I

indicator An item on OmniLab *front panel* (user interface) that displays information and can not be changed by the user .

J

K

L

LED Light-emitting diode. OmniLab uses a *virtual* LEDs in its user interface as indicators.

log file File, recorded to disk and containing the entire experiment, usually uses smaller than datafile (*decimated*) *sampling rate*.

M

monitoring mode Mode that includes data acquisition and display of the acquired data on the chart. Different from the *recording* mode. Also called *Scope* mode.

N

NI-DAQ National Instruments data acquisition driver software. OmniLab uses this software to communicate with your *DAQ* hardware.

O

P

panel	Panel on multiple panel chart (when Stack Plots option is on and #plots is more than one). Also called <i>plot</i> . Can contain one or more <i>channels</i> . All channels in the panel share the same Y axis (Y scale).
path	Directory (folder), where OmniLab will create various files.
plot	See <i>panel</i> .

Q

R

recording mode	Mode that includes data acquisition, display on the chart, and writing (saving) the acquired data to the file. Different from the <i>monitoring (scope)</i> mode.
----------------	---

S

scan rate	See <i>sampling rate</i> .
sampling rate	Number of data points per one second worth of data, also called <i>scan rate</i> .
scope mode	See <i>monitoring mode</i> .

T

U

V

view	User interface window, <i>GUI</i> , <i>front panel</i> .
------	--

W

X

Y

Z

OmniLab datasheet

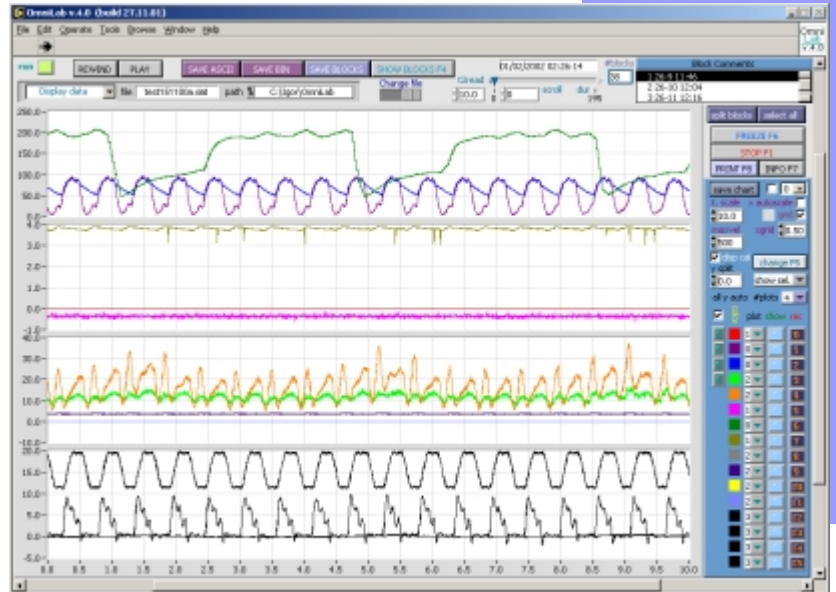
Please, see the next page...

OmniLab

Physiological Data Acquisition, Retrieval and Analysis

Features

- Up to 16 analog input channels
- Output triggers for communication
- Variable sampling rate
- Switch between "monitoring" and "record" modes
- Log the entire experiment to separate file with decimated sampling rate
- Streaming-to-disk capabilities
- Calibration routine
- Various display options
- Online data analysis during data acquisition
- Mark events in data with time-stamped comments
- Full-screen mode
- Playback mode
- Retrieval and analysis of data blocks according to event comments
- Export data regions of interest or whole blocks to ASCII or binary file
- Sample Matlab software and source code available for reading and analysis of exported binary files



System Requirements

- 586 PC, National Instruments data acquisition (DAQ) board with NI-DAQ drivers
- Windows 2000/NT/Me/9x with minimum 32 MB RAM (128 MB recommended)

Overview

OmniLab is a versatile data acquisition and analysis software package designed specifically for physiological labs. OmniLab is written in LabVIEW® (National Instruments, <http://www.ni.com>) and works with NI DAQ hardware. While OmniLab basic package already includes many features and options, powerful LabVIEW programming environment and flexible modular structure of OmniLab allow quick and efficient customization and tailoring for even more specific customer's needs. Visit OmniLab website (<http://igoresha.virtualave.net/LabVIEW/OmniLab>) for more information and updates.